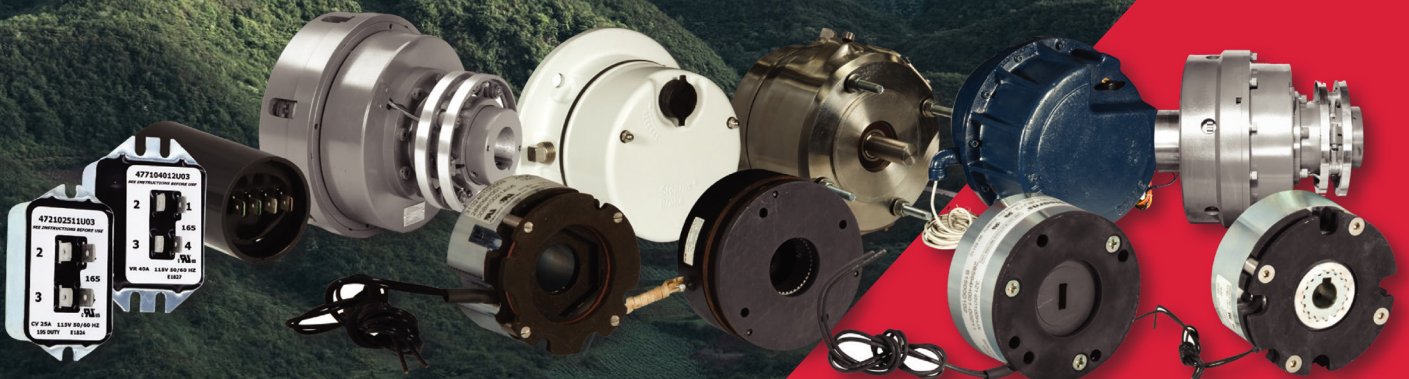


Product Line Overview

BRAKES, CLUTCHES & SINPAC[®] SOLID STATE SWITCHES





About Us Stearns Brakes Set the Standard

Stearns is the market leader in providing quality products, outstanding service, engineering expertise and support to our customers. We understand reliability is critical. We offer over 100 years of proven dependability, unmatched on-time delivery, shorter lead times, pre-sale and post-sale application and service support by brake experts, and on-site research and development lab for rapid prototype production.

AC Style Motor Brakes | Solenoid Actuated Benefits

- Market leader & primary supplier to all US motor manufacturers
- Broadest range of torque, enclosures & options to meet customer applications
- Standard AC voltage, DC voltages also available
- Rapid response times for set & release of brake
- Brakes are easily repairable with readily available replacement parts
- The ONLY brake manufacturer to offer self-adjusting brakes & produce its own friction discs

DC Style Motor Brakes | Armature Actuated Benefits

- Standard DC voltage, can be rectified for AC
- Simple construction, less wear parts, longer life with high cycle rates
- Available in IEC or NEMA frame sizes
- Quiet brake features available for sound sensitive environments

Encoder Brake Benefits

- Cast-aluminum housing that meets IP54 requirements
- Optimized for cool temperature operation

SINPAC® Single Phase Motor Switch Benefits

- Solid-state switches are superior to mechanical switches
- Extends the life & reliability of the motor, especially for high-cycling or “dirty” environments
- Fast & easy to install & replace mechanical switches
- Sealed, spark-free switches for challenging environments
- Our parts work for a variety of motor manufacturers
- Capacitor start, capacitor start & run, & instant reversing
- A few SINPAC switches sizes replace dozens of mechanical switches

TENV Modular Clutch Brakes | SuperMod Benefits

- Cast-aluminum housing that meets IP54 requirements
- Optimized for cool temperature operation
- Design optimized for reliability & reduced parts count
- Automatic gap adjustment
- Completely gasketed conduit box resists moisture & spray
- Washdown (IP55) availability in select models

Key Industries

- Marine Equipment
- Residential Elevators
- Mining
- Agriculture
- Wind Energy
- Material Handling

Certifications

- ISO 9001:2015
- RoHS Compliant
- UL Recognized / UL Listed
- cULus Listed
- ABS Type Approved
- MSHA Certified

Manufacturing Facility

- 150,000 Square Feet
- Research & Development Lab
- CNC/DNC Machine Shop
- Complete Assembly Capability
- Internal Six Sigma
- Lean Manufacturing
- On-Site Quality Assurance Lab

» Solenoid Actuated Brakes

Close Coupled for Non-Drive End of Motor

Mounts Directly to Motor | AC Operated, DC Optional



48,100 Series

Details	Data
NEMA Frame	48C
Torque (lb-ft)	1.5 - 6
Nm	2 - 8
Enclosure	UL Type 1
IP Rating*	23



56,X00 Series

Details	Data
NEMA Frame	56C - 145TC
Torque (lb-ft)	1.5 - 25
Nm	2 - 34
Enclosure	UL Type 1, Type 4x
IP Rating*	21, 23, 56



56,900 Series

Details	Data
NEMA Frame	56C - 145TC
Torque (lb-ft)	3 - 25
Nm	4 - 34
Enclosure	UL Type 4x
IP Rating*	56



87,000 Series

Details	Data
NEMA Frame	182TC - 256TC/UC
Torque (lb-ft)	6 - 125
Nm	8 - 169
Enclosure	UL Type 1, Type 4x
IP Rating*	23, 56



87,100 Series

Details	Data
NEMA Frame	284TC/UC - 286TC/UC
Torque (lb-ft)	50 - 125
Nm	68 - 169
Enclosure	UL Type 1
IP Rating*	23, 56



81,000 Series

Details	Data
NEMA Frame	324 - 405TC/TSC/UC/USC
Torque (lb-ft)	125 - 230
Nm	169 - 312
Enclosure	UL Type 1
IP Rating*	23, 56



82,000 Series

Details	Data
NEMA Frame	324 - 405TC/TSC/UC/USC
Torque (lb-ft)	125 - 440
Nm	169 - 597
Enclosure	UL Type 1
IP Rating*	23, 56



86,000 Series

Details	Data
NEMA Frame	444 - 445TC/TSC/UC/USC
Torque (lb-ft)	500 - 1000
Nm	678 - 1356
Enclosure	UL Type 1
IP Rating*	23, 56



86,100 Series

Details	Data
NEMA Frame	505TC/TSC/UC/USC
Torque (lb-ft)	500 - 1000
Nm	678 - 1345
Enclosure	UL Type 1
IP Rating*	23, 56

* IP rating is self-declared

Solenoid Actuated Brakes

Division 1 Hazardous Location

AC Operated



65,300 Series

Details	Data
NEMA Frame	56C - 145TC
Torque (lb-ft)	1.5 - 15
Nm	2 - 20
Enclosure	IP 23, 56 / NEMA 7, 9
UL Listed	File E14893



87,300 Series

Details	Data
NEMA Frame	182TC - 256TC/UC
Torque (lb-ft)	10 - 105
Nm	14 - 142
Enclosure	IP 23, 55 / NEMA 7, 9
UL Listed	File E14893



82,300 Series

Details	Data
NEMA Frame	324 - 405TC/TSC/UC/USC
Torque (lb-ft)	125 - 330
Nm	169 - 447
Enclosure	IP 56 / NEMA 7, 9
UL Listed	File E14893



87,300 Series

Details	Data
Foot Mounted	-
Torque (lb-ft)	10 - 105
Nm	14 - 142
Enclosure	IP 23 / NEMA 7, 9
UL Listed	File E14893



82,300 Series

Details	Data
Foot Mounted	-
Torque (lb-ft)	125 - 330
Nm	169 - 447
Enclosure	IP 23 / NEMA 7, 9
UL Listed	File E14893

Division 2 Hazardous Location



56,800 Series

Details	Data
NEMA Frame	56C - 145TC
Torque (lb-ft)	1.5 - 25
Nm	2 - 34
Enclosure	IP 56
UL Listed	File E14893



87,800 Series

Details	Data
NEMA Frame	182TC - 256TC/UC
Torque (lb-ft)	6 - 105
Nm	8 - 142
Enclosure	IP 56
UL Listed	File E14893

» Solenoid Actuated Brakes

Double C-Face Coupler Brakes for Drive End of Motor

Mounts Between Motor & Gearbox | Self-Adjusting, AC Operated



56,700 Series

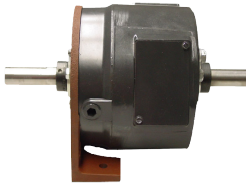
Details	Data
NEMA Frame	56C - 145TC
Torque (lb-ft)	1.5 - 25
Nm	2 - 34
Enclosure	UL Type 1, Type 4x
IP Rating*	23, 56



87,700 Series

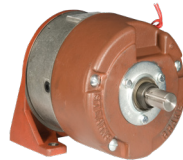
Details	Data
NEMA Frame	182TC - 256TC/UC
Torque (lb-ft)	10 - 105
Nm	14 - 142
Enclosure	UL Type 1
IP Rating*	23, 56

Foot Mounted with Bearing Supported Thru-Shaft



56,703 Series

Details	Data
NEMA Frame	56C - 145TC
Torque (lb-ft)	1.5 - 25
Nm	2 - 34
Enclosure	UL Type 1
IP Rating*	23



87,200 Series

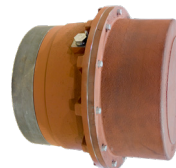
Details	Data
NEMA Frame	182TC - 256TC/UC
Torque (lb-ft)	10 - 105
Nm	14 - 142
Enclosure	UL Type 1
IP Rating*	23, 56

Special Application Brakes



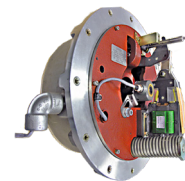
Marine/Maritime/Navy

Details	Data
NEMA Frame	56C - 505USC
Torque (lb-ft)	3 - 1000
Nm	4 - 1356
IP Rating*	56



Mining - MSHA Certified

Details	Data
NEMA Frame	324TC - 405TC
Torque (lb-ft)	125 - 330
Nm	169 - 447
IP Rating*	56
Certification	MSHA



Encoder Brakes

Details	Data
NEMA Frame	182TC - 405TC
Torque (lb-ft)	25 - 330
Nm	34 - 447
Enclosure	UL Type 1
IP Rating*	56
UL Listed	Models Available

* IP rating is self-declared

Armature Actuated Brakes

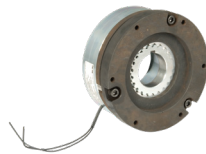
Armature Actuated Brakes

Accepted by Motor Manufacturers & UL Recognition Coil Insulation System



310 Servo Brake

Details	Data
Size	1.79 - 5.0
Torque (lb-in)	10 - 350
Nm	1.1 - 39.5
Enclosure	Open
UL Recognized	Insulation System File E125303



311 Servo Brake

Details	Data
Size	3.38 - 5.0
Torque (lb-in)	75 - 400
Nm	8.5 - 45.2
Enclosure	Open
UL Recognized	Insulation System File E125303



320 Gear Motor Brake

Details	Data
Size	1.2 - 2.8
Torque (lb-in)	3 - 50
Nm	0.34 - 5.6
Enclosure	Open
UL Recognized	Insulation System File E125303



321 / 322 Gear Motor Brake

Details	Data
Size	1.2 - 2.8
Torque (lb-in)	3 - 72
Nm	0.34 - 8.1
IP Rating*	42, 54
UL Recognized	Insulation System File E125303



321 / 322 C-Face Mount

Details	Data
NEMA Frame	48C - 56C
Torque (lb-ft)	1.5 - 25
Nm	2 - 34
IP Rating*	42, 54
UL Recognized	Insulation System File E125303



330 / 331 / 333 Metric Frame

Details	Data
Size	72 - 278
Torque (lb-ft)	3 - 300
Nm	4 - 400
Enclosure	Open
UL Recognized	Insulation System File E125303



330 / 331 / 333 C-Face Frame

Details	Data
Size	48C, 56C, 182 - 184TC, 284 - 286TC/324TC - 405TSC
Torque (lb-ft)	3 - 300
Nm	4 - 400
IP Rating*	43, 54
UL Recognized	Insulation System File E125303



350 Enclosed C-Face

Details	Data
Size	182 - 184IC/284 - 286TC/324TC - 405TSC
Torque (lb-ft)	75 - 300
Nm	102 - 400
IP Rating*	56
UL Recognized	Insulation System File E125303



360 Enclosed C-Face

Details	Data
Size	182 - 184IC/284 - 286TC/324TC - 405TSC
Torque (lb-ft)	35 - 300
Nm	47 - 400
IP Rating*	56
UL Recognized	Insulation System File E125303

* IP rating is self-declared

Other Product Offerings

Special Application Brakes

Accepted by Motor Manufacturers & UL Recognition



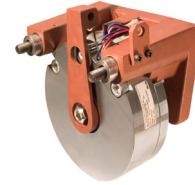
Thin Profile Brake

Details	Data
Mounting	Special Specific
Torque (lb-ft)	42, 84
Nm	57, 114
IP Rating*	56
UL Recognized	File E71115 Insulation System File E125303



Quiet Brake

Details	Data
NEMA Frame	56C, 182TC - 405TC
Torque (lb-ft)	25 - 300
Nm	34 - 447
IP Rating*	43, 56
UL Recognized	Insulation System File E125303



Caliper Brake

Details	Data
Mounting	Special Post Mounted
Torque (lb-ft)	Customer Motor Diameter Dependent
Nm	-
Enclosure	Open
UL Recognized	Insulation System File E125303

SINPAC® Switches | Electric Starting Switches for Single Phase



CV / 2CV Series

Details	Data
Motor Type	Capacitor Start
Max Motor HP	1/2 - 5
Switch Rating	16 - 50 Amps
Start Circuit	115 or 230 Volts
UL Recognized	File E71115



VR / 2VR Series

Details	Data
Motor Type	Capacitor Start & Run
Max Motor HP	1/2 - 5
Switch Rating	16 - 50 Amps
Start Circuit	115 or 230 Volts
UL Recognized	File E71115



IR Series / Instant Reverse

Details	Data
Motor Type	Capacitor Start & Run
Max Motor HP	1/2 - 2
Switch Rating	25 - 40 Amps
Start Circuit	115 Volts
UL Recognized	File E71115

SuperMod Clutches & Brakes | Power-On Modules



Clutch-Brake Modules

Details	Data
NEMA Frame	56C - 210TC
Static Torque (lb-ft)	16 - 145
Horse Power	1/8 - 10
IP Rating*	54, 55
UL Recognized	Models Available



Clutch Only Modules

Details	Data
NEMA Frame	56C - 210TC
Static Torque (lb-ft)	16 - 145
Horse Power	1/8 - 10
IP Rating*	54, 55
UL Recognized	Models Available



Brake Only Modules

Details	Data
NEMA Frame	56C - 210TC
Static Torque (lb-ft)	16 - 145
Horse Power	1/8 - 10
IP Rating*	54, 55
UL Recognized	Models Available

* IP rating is self-declared

ALL AROUND
THE GLOBE,

CUSTOMERS TRUST
OUR PROVEN BRANDS.

Why Choose Stearns?

When it comes to providing highly engineered products that improve productivity and efficiency for industrial applications worldwide, Stearns is the most reliable in the industry. Commitment to customer satisfaction and superior value extend across every business function.

Delivering Lowest Total Cost of Ownership

The highest quality products are designed to help prevent equipment downtime and increase productivity and dependable operation.

Valuable Expertise

An extensive product offering is accompanied by global sales specialists, customer service and maintenance support teams, available anytime.

Solutions to Enhance Ease of Doing Business

Commitment to operational excellence ensures the right products at the right place at the right time.