



Corrosion Resistant Bearings



Keep Moving Long

Continuous high speed operation, the most stringent of hygiene standards and operating conditions where heat, cold and damp are the norm; this calls for bearings that you can rely on to take extreme conditions in their stride, as well as making cost-effective production possible. KML bearings for the food and beverage industries are robust, made of corrosion resistant stainless steel and lubricated for life.

Apart from long operating runs, hygiene, health and safety are the key factors in the food and beverage industries. This means that sealing discs on the belt drive bearings and sheaves must not distort during high pressure cleaning. Bearings and their cages must be corrosion-resistant and lubricants should not leak.



Applications

- Food processing plants
- Food packaging plants
- Beverage, Brewing and Bottling plants
- Meat, Poultry, Seafood processing plants
- Dairy Industry plants
- Sugar processing plants
- Pharmaceutical plants
- Chemical processing plants
- Rubber and Plastics plants
- Pulp and Paper Mills
- Marine and Naval applications
- Car Wash
- Refrigeration and freezer plants
- Agricultural Harvesting plants and machinery
- Municipal (Sand and Salt Spreaders)
- A Wide range of Material Handling Machinery and Conveyors

Special features:

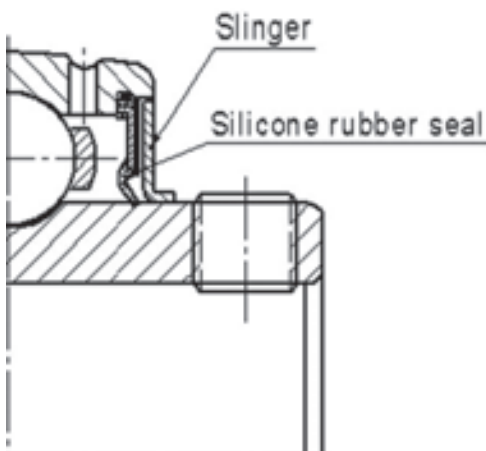
- Reducing the number of interfaces by integrating functions
- Compact designs
- Freedom from maintenance
- Reliable from maintenance
- Components and subsystems that are matched precisely to one another

KML Corrosion Resistant Thermoplastic & Stainless Steel Mounted Unit

- The insert bearing is constructed of 440C stainless steel for optimum raceway and ball bearing heat treat hardening.
- Flingers and Retainers are from 304 Grade Stainless Steel which offers excellent corrosion resistance.
- Bearings are filled with FDA and HACCP approved MOBIL FM222 food grade grease.
- All housing units have smooth surfaces which are easily cleaned with high pressure wash down equipment.
- Stainless Steel and Thermoplastic Housings with all Stainless Steel Insert Bearings. Designed for applications requiring superior resistance to corrosion and available in both inch and metric bore sizes.

Stainless Steel Insert Bearings

- AISI 440C Stainless Steel Rings and Balls
- AISI 304 Stainless Steel Retainers
- Setscrew Lock - Wide Inner Ring
- Mobil FM 222 food grade grease
- Silicone Seals with AISI 304 Stainless Steel Flingers
- AISI 304 Stainless Steel Setscrews
- Anti Rotation Pin
- Cup point knurled edge set screws provide positive locking to the shaft.
- KML high frequency annealing process in the critical set screw area eliminates cracking.
- 304 grade stainless steel slinger creates an effective outer barrier that protects the internal bearing surfaces and moves contaminants away.



- The metal backed silicon rubber seal snaps into a groove in the outer race preventing contact with the ball bearing retainer.
- Stainless steel slinger creates a labyrinth barrier channel protecting the bearing races.
- Insert bearings are filled with Mobil FM 222 food grade grease which is approved for HACCP compliant facilities.



SSUCTPP 200 Series

Page: 04



SSUCTPTB 200 Series

Page: 05



SSUCTPFL 200 Series

Page: 06



SSUCTPF 200 Series

Page: 07



SSUCTPFB 200 Series

Page: 08



SSUCTPT 200 Series

Page: 09



SSUCP 200 Series

Page: 10



SSUCPA 200 Series

Page: 11



SSUCFL 200 Series

Page: 12



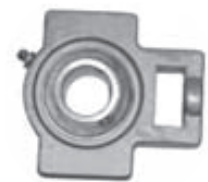
SSUCF 200 Series

Page: 13



SSUCFB 200 Series

Page: 14



SSUCT 200 Series

Page: 15



OPEN Cover

Page: 16



CLOSE Cover

Page: 16



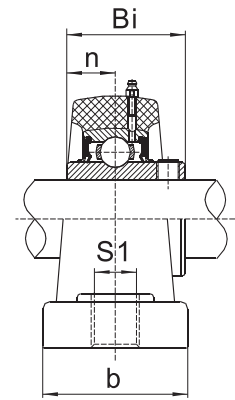
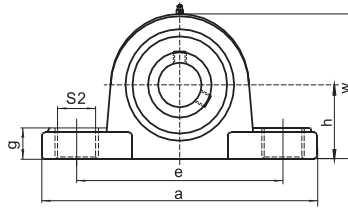
BACK Seals

Page: 16

Stainless steel insert + Thermoplastic housing

- Reinforced PBT Thermoplastic Housings
- AISI 440C Stainless Steel Rings and Balls
- AISI 304 Stainless Steel Flingers and Retainers
- Mobil FM222 food grade grease
- Smooth Surface for Easy Cleaning
- Maximum operating temperature 285 °F (141°C)
- One piece 316 grade stainless steel bushing or thread insert increases the housing strength.

SSUCTPP 200 Series
Pillow Blocks
Set Screw Locking
Normal Duty

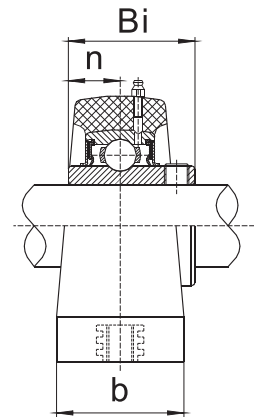
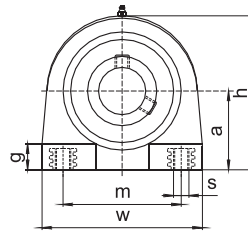


Unit number	Bearing Bore dia.		Dimensions (mm)										Bolt Size	Bearing no.	Housing no.	Basic Dynamic Radial Load rating(c) lbf/N	Weight Kg/lbs
	Inch	mm	h	a	e	b	s1	s2	g	w	Bi	n					
SSUCTPP 201-8 202-10 204 204-12	1/2 5/8 3/4	20	33.3	127	95	37.5	11	14	14.2	65.5	31	12.7	3/8 M10	SSUC 201-8 202-10 204 204-12	TP-P204	2450 10890	0.31 0.68
SSUCTPP 205 205-14 205-15 205-16	7/8 15/16 1	25	36.5	140.5	105	38	11	14	14.5	71	34	14.3	3/8 M10	SSUC 205 205-14 205-15 205-16	TP-P205	2680 11910	0.34 0.75
SSUCTPP 206 206-17 206-18 206-19 206-20	1 1/16 1 1/8 1 3/16 1 1/4	30	42.9	163	119	46	15	18	18	84	38.1	15.9	1/2 M14	SSUC 206 206-17 206-18 206-19 206-20	TP-P206	3750 16670	0.57 1.25
SSUCTPP 207 207-20 207-21 207-22 207-23	1 1/4 1 5/16 1 3/8 1 7/16	35	47.6	168	127	48	15	18	18	94.5	42.9	17.5	1/2 M14	SSUC 207 207-20 207-21 207-22 207-23	TP-P207	4950 22000	0.75 1.65
SSUCTPP 208 208-24	1 1/2	40	49.2	184	137	54	15	18	20	98	49.2	19	1/2 M14	SSUC 208 208-24	TP-P208	5600 24890	1.00 2.20
SSUCTPP 209 209-26 209-27 209-28	1 3/8 1 11/16 1 3/4	45	54	192	146	54	17	20	25	106	49.2	19	1/2 M14	SSUC 209 209-26 209-27 209-28	TP-P209	6320 28090	1.17 2.58
SSUCTPP 210 210-30 2103-31 210-32	1 7/8 1 13/16 2	50	57.2	206	159	59	17	20	24	114	51.6	19	5/8 M16	SSUC 210 210-30 2103-31 210-32	TP-P210	6790 30180	1.28 2.80

Stainless steel insert + Thermoplastic housing

- Reinforced PBT Thermoplastic Housings
- AISI 440C Stainless Steel Rings and Balls
- AISI 304 Stainless Steel Flingers and Retainers
- Mobil FM222 food grade grease
- Smooth Surface for Easy Cleaning
- Maximum operating temperature 285 °F (141 °C)
- One piece 316 grade stainless steel bushing or thread insert increases the housing strength.

SSUCTPTB 200 Series
Tap Base Pillow Blocks
Set Screw Locking
Normal Duty

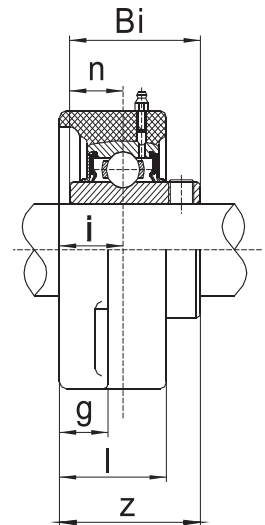
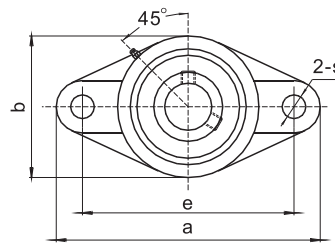


Unit number	Bearing Bore dia.		Dimensions (mm)									Bearing no.	Housing no.	Basic Dynamic Radial Load rating(c) lbf/N	Weight Kg/lbs
	Inch	mm	a	b	h	m	w	s	Bi	n	g				
SSUCTPTB 201-8 202-10 204 204-12	1/2 5/8 3/4	20	33.3	34.5	66	50.8	72.8	M8	31	12.7	13	SSUC 201-8 202-10 204 204-12	TP-TB204	2450 10890	0.27 0.59
SSUCTPTB 205 205-14 205-15 205-16	7/8 15/16 1	25	36.5	39.5	73.5	50.8	76.2	M10	34.1	14.3	13	SSUC 205 205-14 205-15 205-16	TP-TB205	2680 11910	0.315 0.69
SSUCTPTB 206 206-17 206-18 206-19 206-20	1 1/16 1 1/8 1 3/16 1 1/4	30	42.9	42	84	76.2	101	M10	38.1	15.9	16	SSUC 206 206-17 206-18 206-19 206-20	TP-TB206	3750 16670	0.50 1.10
SSUCTPTB 207 207-20 207-21 207-22 207-23	1 1/4 1 5/16 1 3/8 1 7/16	35	47.6	47	95	82.6	110.5	M10	42.9	17.5	18.5	SSUC 207 207-20 207-21 207-22 207-23	TP-TB207	4950 22000	0.73 1.61
SSUCTPTB 208 208-24	1 1/2	40	49.2	48	100.5	88.9	120	M12	49.2	19	20	SSUC 208 208-24	TP-TB208	5600 24890	0.94 2.07
SSUCTPTB 209 209-26 209-27 209-28	1 5/8 1 11/16 1 3/4	45	54	49.5	108.5	95.3	124	M12	49.2	19	20	SSUC 209 209-26 209-27 209-28	TP-TB209	6320 28090	1.10 2.42
SSUCTPTB 210 210-30 2103-31 210-32	1 7/8 1 15/16 2	50	57.2	53	115	101.6	136	M16	51.6	19	21	SSUC 210 210-30 2103-31 210-32	TP-TB210	6790 30180	1.24 2.73

Stainless steel insert + Thermoplastic housing

- Reinforced PBT Thermoplastic Housings
- AISI 440C Stainless Steel Rings and Balls
- AISI 304 Stainless Steel Flingers and Retainers
- Mobil FM222 food grade grease
- Smooth Surface for Easy Cleaning
- Maximum operating temperature 285 °F (141°C)
- One piece 316 grade stainless steel bushing or thread insert increases the housing strength.

SSUCTPFL 200 Series
Two Bolt Flange Units
Set Screw Locking
Normal Duty

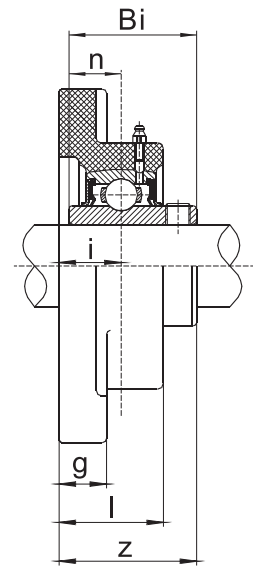
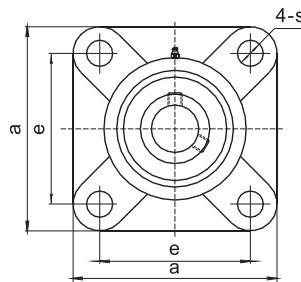


Unit number	Bearing Bore dia		Dimensions (mm)										Bolt Size	Bearing no.	Housing no.	Basic Dynamic Radial Load rating(c) lbf/N	Weight Kg/lbs
	Inch	mm	a	e	b	g	l	s	z	i	Bi	n					
SSUCTPFL 201-8 202-10 204 204-12	1/2 5/8 3/4	20	113	90	65	14	26.5	11	33.3	15	31	12.7	3/8 M10	SSUC 201-8 202-10 204 204-12	TP-FL204	2450 10890	0.26 0.57
SSUCTPFL 205 205-14 205-15 205-16	7/8 15/16 1	25	131	99	70	15	28	11	36.2	16.5	34	14.3	3/8 M10	SSUC 205 205-14 205-15 205-16	TP-FL205	2680 11910	0.31 0.68
SSUCTPFL 206 206-17 206-18 206-19 206-20	1 1/16 1 1/8 1 3/16 1 1/4	30	148	117	80	14.3	30.5	11	40.2	18	38.1	15.9	1/2 M14	SSUC 206 206-17 206-18 206-19 206-20	TP-FL206	3750 16670	0.46 1.01
SSUCTPFL 207 207-20 207-21 207-22 207-23	1 1/4 1 5/16 1 3/8 1 7/16	35	164	130	90	15.5	32	13	44.4	19	42.9	17.5	1/2 M14	SSUC 207 207-20 207-21 207-22 207-23	TP-FL207	4950 22000	0.64 1.41
SSUCTPFL 208 208-24	1 1/2	40	176	144	100	17	35	14	51.7	21.5	49.2	19	1/2 M14	SSUC 208 208-24	TP-FL208	5600 24890	0.87 1.91
SSUCTPFL 209 209-26 209-27 209-28	1 5/8 1 11/16 1 3/4	45	189	149	108	22.5	40.5	17	54.2	24	49.2	19	5/8 M16	SSUC 209 209-26 209-27 209-28	TP-FL209	6320 28090	1.02 2.24
SSUCTPFL 210 210-30 2103-31 210-32	1 7/8 1 15/16 2	50	197	157	115	22	41	17	57.6	25	51.6	19	5/8 M16	SSUC 210 210-30 2103-31 210-32	TP-FL210	6790 30180	1.12 2.50

Stainless steel insert + Thermoplastic housing

- Reinforced PBT Thermoplastic Housings
- AISI 440C Stainless Steel Rings and Balls
- AISI 304 Stainless Steel Flingers and Retainers
- Mobil FM222 food grade grease
- Smooth Surface for Easy Cleaning
- Maximum operating temperature 285 °F (141°C)
- One piece 316 grade stainless steel bushing or thread insert increases the housing strength.

SSUCTPF 200 Series
Four Bolt Flange Units
Set Screw Locking
Normal Duty

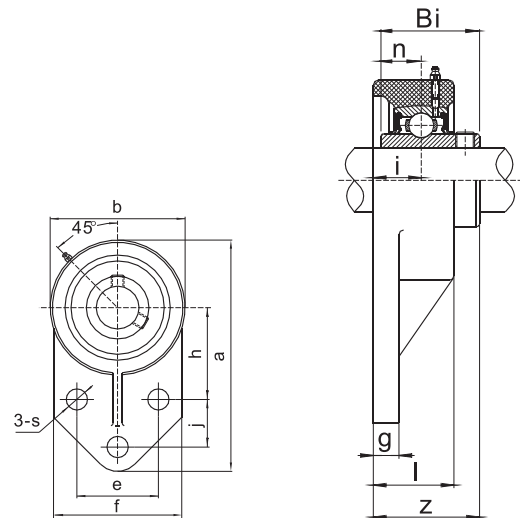


Unit number	Bearing Bore dia.		Dimensions (mm)									Bolt Size	Bearing no.	Housing no.	Basic Dynamic Radial Load rating(c) lbf/N	Weight Kg/lbs
	Inch	mm	a	e	g	l	s	z	i	Bi	n					
SSUCTPF 201-8 202-10 204 204-12	1/2 5/8 3/4	20	86	63.5	14.5	28	11	34.6	16.3	31	12.7	3/8 M10	SSUC 201-8 202-10 204 204-12	TP-F204	2450 10890	0.30 0.66
SSUCTPF 205 205-14 205-15 205-16	7/8 15/16 1	25	95	70	15	29	11	36.7	17	34	14.3	3/8 M10	SSUC 205 205-14 205-15 205-16	TP-F205	2680 11910	0.35 0.77
SSUCTPF 206 206-17 206-18 206-19 206-20	1 1/16 1 1/8 1 3/16 1 1/4	30	107	83	15	31.5	11	41.2	19	38.1	15.9	3/8 M10	SSUC 206 206-17 206-18 206-19 206-20	TP-F206	3750 16670	0.51 1.12
SSUCTPF 207 207-20 207-21 207-22 207-23	1 1/4 1 5/16 1 3/8 1 1/16	35	118	92	16	34.5	19	46.9	21.5	42.9	17.5	7/16 M12	SSUC 207 207-20 207-21 207-22 207-23	TP-F207	4950 22000	0.73 1.61
SSUCTPF 208 208-24	1 1/2	40	130	102	18	36.5	14	53.2	23	49.2	19	1/2 M14	SSUC 208 208-24	TP-F208	5600 24890	1.01 2.22
SSUCTPF 209 209-26 209-27 209-28	1 5/8 1 11/16 1 3/4	45	137	105	19	41	17	54.2	24	49.2	19	1/2 M14	SSUC 209 209-26 209-27 209-28	TP-F209	6320 28090	1.18 2.60
SSUCTPF 210 210-30 2103-31 210-32	1 7/8 1 15/16 2	50	143	111	21	41	17	57.6	25	51.6	19	1/2 M14	SSUC 210 210-30 2103-31 210-32	TP-F210	6790 30180	1.30 2.86

Stainless steel insert + Thermoplastic housing

- Reinforced PBT Thermoplastic Housings
- AISI 440C Stainless Steel Rings and Balls
- AISI 304 Stainless Steel Flingers and Retainers
- Mobil FM222 food grade grease
- Smooth Surface for Easy Cleaning
- Maximum operating temperature 285 °F (141°C)
- One piece 316 grade stainless steel bushing or thread insert increases the housing strength.

SSUCTPFB 200 Series
Flange bracket
Set Screw Locking
Normal Duty

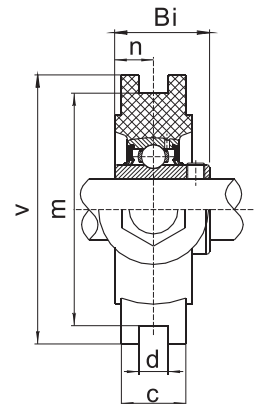
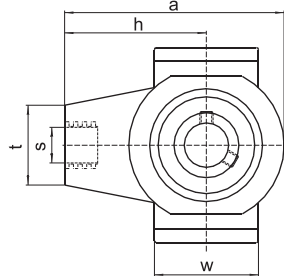


Unit number	Bearing Bore dia.		Dimensions (mm)													Bolt Size	Bearing no.	housing no.	Weight Kg/lbs
	Inch	mm	a	h	e	j	i	g	l	s	b	f	z	Bi	n				
SSUCTPFB 201-8 202-10 204 204-12	1/2 5/8 3/4	20	108	42.9	38.1	22.2	15	14	26.5	11	62.5	61.5	34.2	31	12.7	5/16 M8	SSUC 201-8 202-10 204 204-12	TP-FB204	0.26 0.572
SSUCTPFB 205 205-14 205-15 205-16	7/8 15/16 1	25	121	48	41.3	28.6	16.5	13	28	11	69	62.5	36.5	34.1	14.3	5/16 M8	SSUC 205 205-14 205-15 205-16	TP-FB205	0.31 0.68
SSUCTPFB 206 206-17 206-18 206-19 206-20	1 1/16 1 1/8 1 3/16 1 1/4	30	138.5	52.4	46.1	31.8	18	13	28	11	83	76	40.8	38.1	15.9	5/16 M8	SSUC 206 206-17 206-18 206-19 206-20	TP-FB206	0.49 1.08
SSUCTPFB 207 207-20 207-21 207-22 207-23	1 1/4 1 3/16 1 3/8 1 7/16	35	156	60.3	50.8	31.8	19	15	32	13	94	82	46.4	42.9	17.5	3/8 M10	SSUC 207 207-20 207-21 207-22 207-23	TP-FB207	0.71 1.56

Stainless steel insert + Thermoplastic housing

- Reinforced PBT Thermoplastic Housings
- AISI 440C Stainless Steel Rings and Balls
- AISI 304 Stainless Steel Flingers and Retainers
- Mobil FM222 food grade grease
- Smooth Surface for Easy Cleaning
- Maximum operating temperature 285 °F (141°C)
- One piece 316 grade stainless steel bushing or thread insert increases the housing strength.

SSUCTPT 200 Series
Take-Up units
Set Screw Locking
Normal Duty

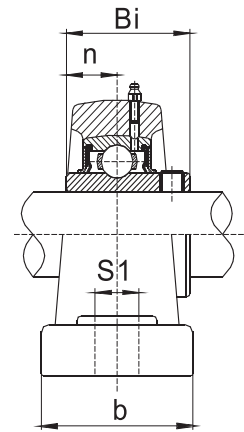
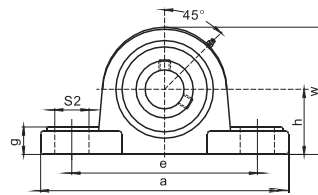


Unit number	Bearing Bore dia.		Dimensions (mm)										Bearing no.	Housing no.	Weight Kg/lbs	
	Inch	mm	a	c	d	h	m	t	v	w	Bi	n				s
SSUCTPT 201-8 202-10 204	1/2 5/8	20	99	23	12	64	76	36	87	46	31	12.7	1/2 M14	SSUC 201-8 202-10 204	TP-T204	0.36 0.79
SSUCTPT 205 205-14 205-15 205-16	7/8 15/16 1	25	99	24	12	64	76	36	88	47	34	14.3	1/2 M14	SSUC 205 205-14 205-15 205-16	TP-T205	0.37 0.81
SSUCTPT 206 206-17 206-18 206-19 206-20	1 1/16 1 1/8 1 3/16 1 1/4	30	125	27.5	12	76	89	40	101	63	38.4	15.9	5/8 M16	SSUC 206 206-17 206-18 206-19 206-20	TP-T206	0.61 1.34
SSUCTPT 207 207-20 207-21 207-22 207-23	1 1/4 1 3/16 1 3/8 1 7/16	35	125	28	12	76	89	40	102	63	42.9	17.5	5/8 M16	SSUC 207 207-20 207-21 207-22 207-23	TP-T207	0.75 1.65
SSUCTPT 208 208-24	1 1/2	40	140	29	16	85	102	40	113	80	49.2	19	5/8 M16	SSUC 208 208-24	TP-T208	1.01 2.22
SSUCTPT 209 209-26 209-27 209-28	1 5/8 1 11/16 1 3/4	45	149	40	16	90	102	50	117	85	49.2	19	3/4 M20	SSUC 209 209-26 209-27 209-28	TP-T209	1.17 2.57
SSUCTPT 210 210-30 2103-31 210-32	1 7/8 1 15/16 2	50	149	35.5	16	90	102	50	117	85	51.6	19	3/4 M20	SSUC 210 210-30 2103-31 210-32	TP-T210	1.28 2.82

Stainless steel insert + Stainless steel housing

- AISI 304 Stainless Steel Housing
- AISI 440C Stainless Steel Rings and Balls
- AISI 304 Stainless Steel Flingers and Retainers
- Mobil FM222 food grade grease
- Smooth Surface for Easy Cleaning
- Set screw Lock – Wide Inner Ring
- AISI 304 Stainless Steel Setscrews

SSUCP 200 Series
Pillow Blocks
Set Screw Locking
Normal Duty

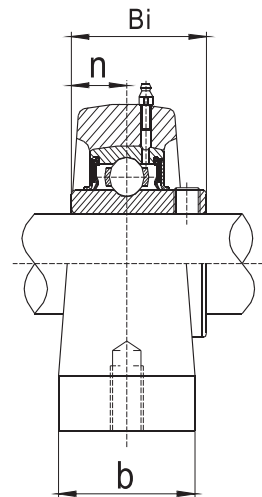
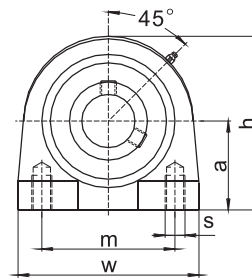


Unit number	Bearing Bore dia.		Dimensions (mm)										Bolt Size	Bearing no.	Housing no.	Basic Dynamic Radial Load rating(c) lbf/N	Weight Kg/lbs	
	Inch	mm	h	a	e	b	s1	s2	g	w	Bi	n						
SSUCP 201-8 202-10 204	1/2 5/8	20	33.3	126	95	38	11	17.5	15.1	65.1	31	12.7	3/8 M10	SSUC 201-8 202-10 204	SSP204	2450 10890	0.87 1.91	
SSUCP 204-12	3/4																	
SSUCP 205 205-14 205-15 205-16	7/8 15/16 1	25	36.5	140	105	38	12.7	18	16	70	34.1	14.3	3/8 M10	SSUC 205 205-14 205-15 205-16	SSP205	2680 11910	0.94 2.07	
SSUCP 206 206-17 206-18 206-19 206-20	1 1/16 1 1/8 1 3/16 1 1/4	30	42.9	165	121	48	14.3	21	18	83	38.1	15.9	7/16 M12	SSUC 206 206-17 206-18 206-19 206-20	SSP206	3750 16670	1.61 3.54	
SSUCP 207 207-20 207-21 207-22 207-23	1 1/4 1 3/16 1 3/8 1 7/16	35	47.6	167	127	48	14.3	22	19	94	42.9	17.5	7/16 M12	SSUC 207 207-20 207-21 207-22 207-23	SSP207	4950 22000	1.9 4.18	
SSUCP 208 208-24	1 1/2	40	49.2	184	136.5	54	14.3	22	19	100	49.2	19	7/16 M12	SSUC 208 208-24	SSP208	5600 24890	2.46 5.41	
SSUCP 209 209-26 209-27 209-28	1 5/8 1 11/16 1 3/4	45	54	190	146	54	15	21	20	109	49.2	19	5/8 M16	SSUC 209 209-26 209-27 209-28	SSP209	6320 28090	2.77 6.1	
SSUCP 210 210-30 2103-31 210-32	1 7/8 1 15/16 2	50	57.2	206	159	60	18	24	22	114	51.6	19	5/8 M16	SSUC 210 210-30 2103-31 210-32	SSP210	6790 30180	3.18 6.99	

Stainless steel insert + Stainless steel housing

- AISI 304 Stainless Steel Housing
- AISI 440C Stainless Steel Rings and Balls
- AISI 304 Stainless Steel Flingers and Retainers
- Mobil FM222 food grade grease
- Smooth Surface for Easy Cleaning
- Set screw Lock – Wide Inner Ring
- AISI 304 Stainless Steel Setscrews

SSUCPA 200 Series
Tap Base Pillow Blocks
Set Screw Locking
Normal Duty

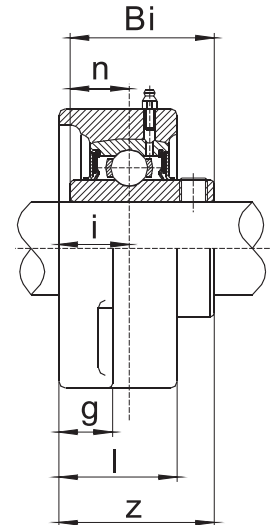
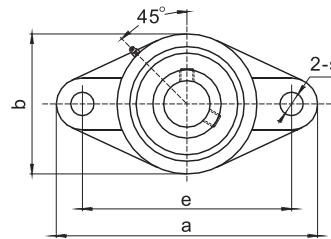


Unit number	Bearing Bore dia.		Dimensions (mm)								Bearing no.	Housing no.	Basic Dynamic Radial Load rating(c) lbf/N	Weight Kg/lbs
	Inch	mm	a	b	h	m	w	s	Bi	n				
SSUCPA 201-8 202-10 204 204-12	1/2 5/8 3/4	20	33.3	38	65	50.8	73	3/8-16	31	12.7	SSUC 201-8 202-10 204 204-12	SSPA204	2450 10890	0.70 1.54
SSUCPA 205 205-14 205-15 205-16	7/8 15/16 1	25	36.5	38	71	50.8	76	3/8-16	34.1	14.3	SSUC 205 205-14 205-15 205-16	SSPA205	2680 11910	0.85 1.87
SSUCPA 206 206-17 206-18 206-19 206-20	1 1/16 1 1/8 1 3/16 1 1/4	30	42.9	38	86	76.2	102	7/16-14	38.1	15.9	SSUC 206 206-17 206-18 206-19 206-20	SSPA206	3750 16670	1.10 2.42
SSUCPA 207 207-20 207-21 207-22 207-23	1 1/4 1 3/16 1 3/8 1 7/16	35	47.6	48	95	82.6	108	1/2-13	42.9	17.5	SSUC 207 207-20 207-21 207-22 207-23	SSPA207	4950 22000	1.43 3.15
SSUCPA 208 208-24	1 1/2	40	49.2	48	100	88.9	117	1/2-13	49.2	19	SSUC 208 208-24	SSPA208	5600 24890	1.80 3.96
SSUCPA 209 209-26 209-27 209-28	1 5/8 1 11/16 1 3/4	45	54	51	108	95.3	127	1/2-13	49.2	19	SSUC 209 209-26 209-27 209-28	SSPA209	6320 28090	2.50 5.50
SSUCPA 210 210-30 2103-31 210-32	1 7/8 1 15/16 2	50	57.2	51	117	101.6	140	5/8-11	51.6	19	SSUC 210 210-30 2103-31 210-32	SSPA210	6790 30180	3.10 6.82

Stainless steel insert + Stainless steel housing

- AISI 304 Stainless Steel Housing
- AISI 440C Stainless Steel Rings and Balls
- AISI 304 Stainless Steel Flingers and Retainers
- Mobil FM222 food grade grease
- Smooth Surface for Easy Cleaning
- Set screw Lock – Wide Inner Ring
- AISI 304 Stainless Steel Setscrews

SSUCFL 200 Series
Two Bolt Flange Units
Set Screw Locking
Normal Duty

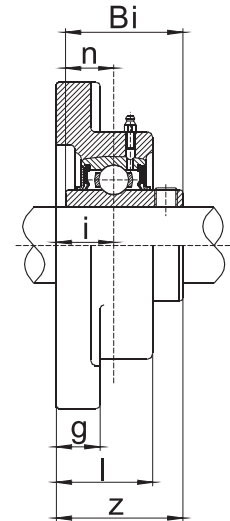
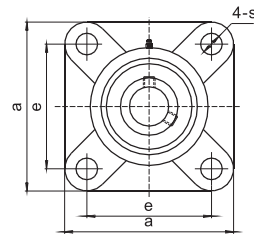


Unit number	Bearing Bore dia.		Dimensions (mm)										Bolt Size	Bearing no.	Housing no.	Basic Dynamic Radial Load rating(c) lbf/N	Weight Kg/lbs
	Inch	mm	a	e	b	g	l	s	z	i	Bi	n					
SSUCFL 201-8 202-10 204 204-12	1/2 5/8 3/4	20	112	90	60	11.5	25.4	10	33.4	15.1	31	12.7	3/8 M10	SSUC 201-8 202-10 204 204-12	SSFL204	2450 10890	0.50 1.10
SSUCFL 205 205-14 205-15 205-16	7/8 15/16 1	25	125	99	68	13	27	12	35.7	15.9	34.1	14.3	3/8 M10	SSUC 205 205-14 205-15 205-16	SSFL205	2680 11910	0.64 1.408
SSUCFL 206 206-17 206-18 206-19 206-20	1 1/16 1 1/8 1 3/16 1 1/4	30	141	117	80	13	30	12	40.1	17.9	38.1	15.9	3/8 M10	SSUC 206 206-17 206-18 206-19 206-20	SSFL206	3750 16670	0.90 1.98
SSUCFL 207 207-20 207-21 207-22 207-23	1 1/4 1 5/16 1 3/8 1 7/16	35	155.5	130	90	14.3	33	13	44.5	19.1	42.9	17.5	7/16 M12	SSUC 207 207-20 207-21 207-22 207-23	SSFL207	4950 22000	1.22 2.64
SSUCFL 208 208-24	1 1/2	40	171.5	144	100	14.3	36	13	51.2	21	49.2	19	7/16 M12	SSUC 208 208-24	SSFL208	5600 24890	1.63 3.59
SSUCFL 209 209-26 209-27 209-28	1 5/8 1 11/16 1 3/4	45	179	148	108	14.3	38	15	52	21.8	49.2	19	5/8 M16	SSUC 209 209-26 209-27 209-28	SSFL209	6320 28090	1.84 4.05
SSUCFL 210 210-30 2103-31 210-32	1 7/8 1 15/16 2	50	189	157	115	15.1	39	15	54.4	21.8	51.6	19	5/8 M16	SSUC 210 210-30 2103-31 210-32	SSFL210	6790 30180	2.16 4.75

Stainless steel insert + Stainless steel housing

- AISI 304 Stainless Steel Housing
- AISI 440C Stainless Steel Rings and Balls
- AISI 304 Stainless Steel Flingers and Retainers
- Mobil FM222 food grade grease
- Smooth Surface for Easy Cleaning
- Set screw Lock – Wide Inner Ring
- AISI 304 Stainless Steel Setscrews

SSUCF 200 Series
Four Bolt Flange Units
Set Screw Locking
Normal Duty

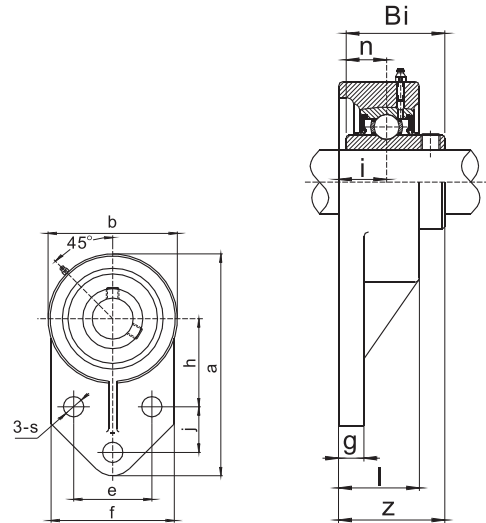


unit number	Bearing Bore dia.		Dimensions (mm)									Bolt Size	Bearing no.	Housing no.	Basic Dynamic Radial Load rating(c) lbf/N	Weight Kg/lbs
	Inch	mm	a	e	g	l	s	z	i	Bi	n					
SSUCF 201-8 202-10 204 204-12	1/2 5/8 3/4	20	86	63.5	12	25.4	11	33.4	15.1	31	12.7	3/8 M10	SSUC 201-8 202-10 204 204-12	SSF204	2450 10890	0.645 1.42
SSUCF 205 205-14 205-15 205-16	7/8 15/16 1	25	95	70	14	27	11.5	35.7	15.9	34.1	14.3	3/8 M10	SSUC 205 205-14 205-15 205-16	SSF205	2680 11910	0.85 1.87
SSUCF 206 206-17 206-18 206-19 206-20	1 1/16 1 1/8 1 3/16 1 1/4	30	108	83	14	30	13.1	40.1	17.9	38.1	15.9	3/8 M10	SSUC 206 206-17 206-18 206-19 206-20	SSF206	3750 16670	1.17 2.57
SSUCF 207 207-20 207-21 207-22 207-23	1 1/4 1 5/16 1 3/8 1 7/16	35	117.5	92	14.3	33	13.1	44.5	19.1	42.9	17.5	7/16 M12	SSUC 207 207-20 207-21 207-22 207-23	SSF207	4950 22000	1.51 3.32
SSUCF 208 208-24	1 1/2	40	130	102	14.3	36	14	51.2	21	49.2	19	7/16 M12	SSUC 208 208-24	SSF208	5600 24890	2.02 4.44
SSUCF 209 209-26 209-27 209-28	1 5/8 1 11/16 1 3/4	45	137	105	14.3	38	16	52	21.8	49.2	19	5/8 M16	SSUC 209 209-26 209-27 209-28	SSF209	6320 28090	2.18 4.80
SSUCF 210 210-30 2103-31 210-32	1 7/8 1 15/16 2	50	143	111	15.1	39	16	54.4	21.8	51.6	19	5/8 M16	SSUC 210 210-30 2103-31 210-32	SSF210	6790 30180	2.43 5.35

Stainless steel insert + Stainless steel housing

- AISI 304 Stainless Steel Housing
- AISI 440C Stainless Steel Rings and Balls
- AISI 304 Stainless Steel Flingers and Retainers
- Mobil FM222 food grade grease
- Smooth Surface for Easy Cleaning
- Set screw Lock – Wide Inner Ring
- AISI 304 Stainless Steel Setscrews

SSUCFB 200 Series
Flange bracket
Set Screw Locking
Normal Duty

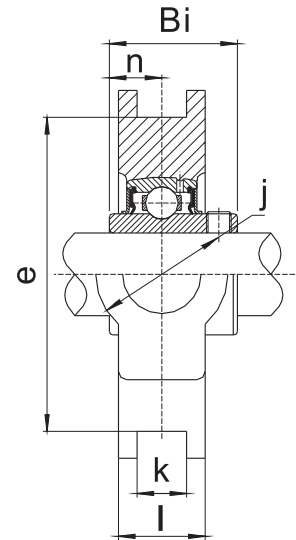
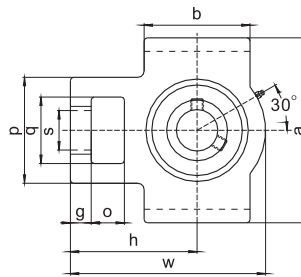


Unit number	Bearing Bore dia.		Dimensions (mm)													Bolt Size	Bearing no.	Housing no.	Weight Kg/lbs
	Inch	mm	a	h	e	j	i	g	l	s	b	f	z	Bi	n				
SSUCFB 201-8 202-10 204 204-12	1/2 5/8 3/4	20	108	42.9	38.1	22.2	16	8	25.4	9.9	63	60	34.3	31	12.7	5/16 M8	SSUC 201-8 202-10 204 204-12	SSFB204	0.58 1.28
SSUCFB 205 205-14 205-15 205-16	7/8 15/16 1	25	121	46	41.3	28.6	17	9.5	29	9.9	70	64	36.8	34.1	14.3	5/16 M8	SSUC 205 205-14 205-15 205-16	SSFB205	0.74 1.63
SSUCFB 206 206-17 206-18 206-19 206-20	1 1/16 1 1/8 1 3/16 1 1/4	30	137	52.4	47.6	31.8	19	9.5	32	9.9	83	70	41.2	38.1	15.9	5/16 M8	SSUC 206 206-17 206-18 206-19 206-20	SSFB206	1.09 2.4
SSUCFB 207 207-20 207-21 207-22 207-23	1 1/4 1 5/16 1 3/8 1 7/16	35	156	60.3	50.8	31.8	21	13.5	37	13.1	95	82.5	46.4	42.9	17.5	3/8 M10	SSUC 207 207-20 207-21 207-22 207-23	SSFB207	1.64 3.61
SSUCFB 208 208-24 208-25	1 1/2 1 9/16	40	164	60	50	41	21	16	34	11.1	100	78	51.2	49.2	19	3/8 M10	SSUC 208 208-24 208-25	SSFB208	2.29 5.04
SSUCFB 209 209-26 209-27 209-28	1 5/8 1 11/16 1 3/4	45	174	65	54	42.9	21	18	34	11.1	106	80	51.2	49.2	19	3/8 M10	SSUC 209 209-26 209-27 209-28	SSFB209	2.59 5.7
SSUCFB 210 210-30 2103-31 210-32	1 7/8 1 15/16 2	50	191	74.6	69.9	41.3	21	13	38	13.1	118	102	53.6	51.6	19	3/8 M10	SSUC 210 210-30 2103-31 210-32	SSFB210	3.14 6.91

Stainless steel insert + Stainless steel housing

- AISI 304 Stainless Steel Housing
- AISI 440C Stainless Steel Rings and Balls
- AISI 304 Stainless Steel Flingers and Retainers
- Mobil FM222 food grade grease
- Smooth Surface for Easy Cleaning
- Set screw Lock – Wide Inner Ring
- AISI 304 Stainless Steel Setscrews

SSUCT 200 Series
Take-Up unit
Set Screw Locking
Normal Duty



Unit number	Bearing Bore dia.		Dimensions (mm)														Bearing no.	Housing no.	Weight Kg/lbs	
	Inch	mm	o	g	p	q	s	b	k	e	a	w	l	j	h	Bi				n
SSUCT 201-8 202-10 204 204-12	1/2 5/8 3/4	20	16	10	51	32	19	51	12	76	89	94	21	32	61	31	12.7	SSUC 201-8 202-10 204 204-12	SS-T204	0.91 2.00
SSUCT 205 205-14 205-15 205-16	7/8 15/16 1	25	16	10	51	32	19	51	12	76	89	97	24	32	62	34.1	14.3	SSUC 205 205-14 205-15 205-16	SS-T205	0.99 2.18
SSUCT 206 206-17 206-18 206-19 206-20	1 1/16 1 1/8 1 3/16 1 1/4	30	16	10	56	37	22	57	12	89	102	113	28	37	70	38.1	15.9	SSUC 206 206-17 206-18 206-19 206-20	SS-T206	1.46 3.21
SSUCT 207 207-20 207-21 207-22 207-23	1 1/4 1 3/16 1 3/8 1 7/16	35	16	13	64	37	22	64	12	89	102	129	30	37	78	42.9	17.5	SSUC 207 207-20 207-21 207-22 207-23	SS-T207	1.81 3.98
SSUCT 208 208-24 208-25	1 1/2 1 7/16	40	19	16	83	49	29	83	16	102	114	144	33	49	88	49.2	19	SSUC 208 208-24 208-25	SS-T208	2.68 5.90
SSUCT 209 209-26 209-27 209-28	1 5/8 1 11/16 1 3/4	45	19	16	83	49	29	83	16	102	117	144	35	49	87	49.2	19	SSUC 209 209-26 209-27 209-28	SS-T209	2.99 6.58
SSUCT 210 210-30 2103-31 210-32	1 7/8 1 15/16 2	50	19	16	83	49	29	86	16	102	117	149	37	49	90	51.6	19	SSUC 210 210-30 2103-31 210-32	SS-T210	3.01 6.62

KML Poly-Guard Sealing System

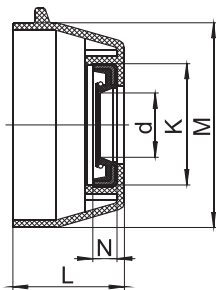
KML Poly-Guard multiple stage sealing provides superior protection of the critical bearing area for increased service life in wash down applications. The Poly-Guard multiple stage sealing system consists of the following options:

1. Thermoplastic PBT housing machined to accept optional barrier seals that increase protection.
2. Closed thermoplastic face cap for complete front face enclosure for applications with non-protruding shafts.
3. Spring-loaded open face cap for applications where the shaft extends past the insert bearing.
4. Spring-loaded rear face seal for complete enclosure of back face mounting area.

The KML Poly-Guard Sealing System virtually eliminates cavities where debris can accumulate. It provides significant improvement in the effectiveness of wash down operations.

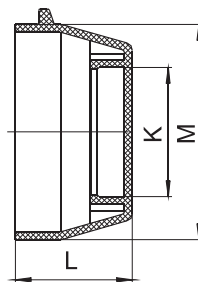


ACCESSORIES – Covers



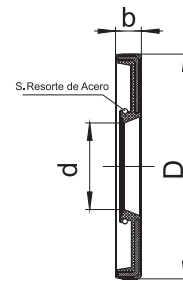
OPEN

Open Cover with Stainless Steel
Spring-Loaded Oil Seal
Material: (Plastic)



CLOSED

Material: (Plastic)



BACK

Back Oil Seals for 2-bolt and 4-Bolt
Flange housings
Material: (Plastic)

Size	Dimensions (mm)				
	K	N	L	M	d
OC 204	32	7	23	50	20
OC 205	37	7	25	55	25
OC 206	42	7	30	64	30
OC 207	47	7	32	74.5	35
OC 208	52	7	37	84	40

Size	Dimensions (mm)		
	K	L	M
CC 204	32	23	50
CC 205	37	25	55
CC 206	42	30	64
CC 207	47	32	74.5
CC 208	52	37	84

Size	Dimensions (mm)		
	d	b	D
BS 204	20	6	52
BS 205	25	6	62
BS 206	30	6	72
BS 207	35	6	82
BS 208	40	6	88

**KML Motion Industries CO., Ltd.**

Address: Rooms 2605-7, Saxon Tower, Cheung Shun Street, Lai Chi Kok, Kowloon, Hong Kong
Tel: 852-2425-1661
Fax: 852-2480-5866

KML Motion Industries (ShangHai) Holding CO., Ltd.

Address: Room H, Floor 20, XinDongya Hotel, 238 Nandan Road East, Shanghai, China
Tel: 86-21-6468-6262
Fax: 86-21-6427-6197

KML Bearing (Xinchang) Company Ltd.

Address: No. 5 Xia'an Road, Yulin subdistrict, Xinchang County, Zhejiang, China
Tel: 86-575-8609-0285

KML Canada

Address: 5586 Ambler Dr., Mississauga, Ontario, L4W 2K9, Canada
Tel: 1-800-565-0044
Fax: 1-905-629-2358

KML USA.

Address: 213 Jones Blvd., P.O. Box 1136, Pottstown, PA 19464, USA
Tel: 610-495-6134, 877-495-6134 (toll free)
Fax: 610-495-6183

E-mail: info@kml-bearing.com [Http://www.kml-bearing.com](http://www.kml-bearing.com)